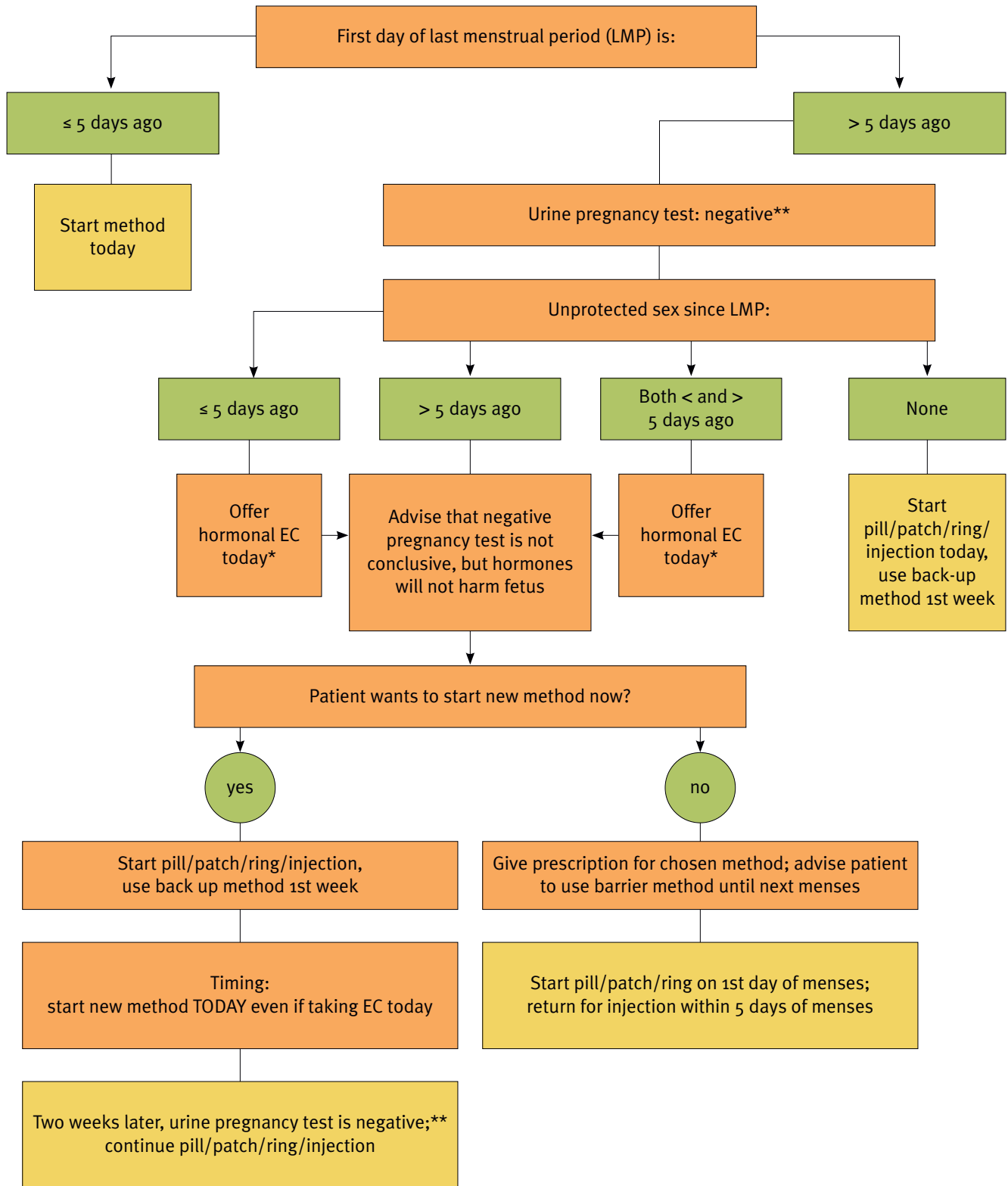


Quick Start Algorithm

Woman requests a new birth control method:

1. Pill, Patch, Ring, Injection

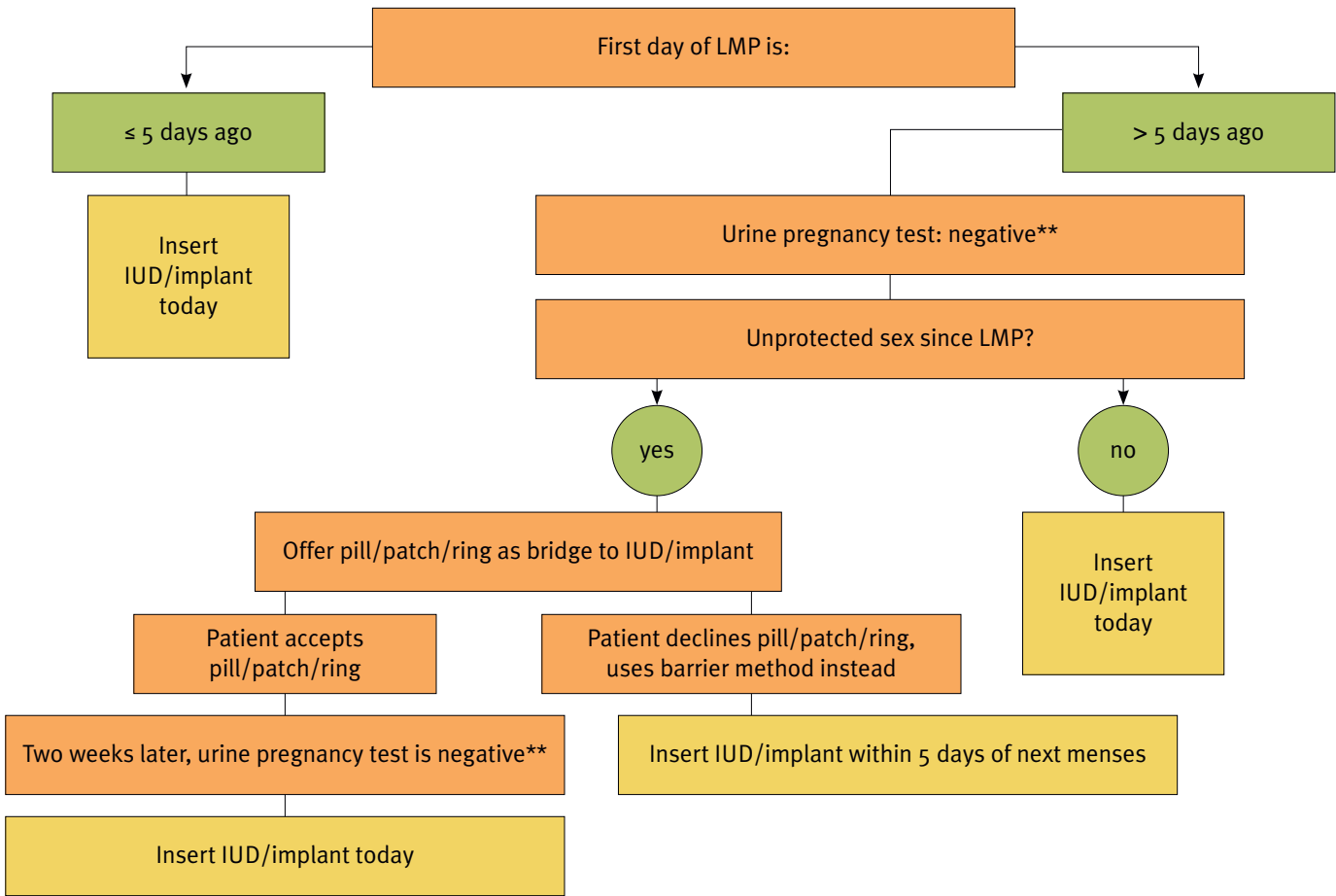


over →

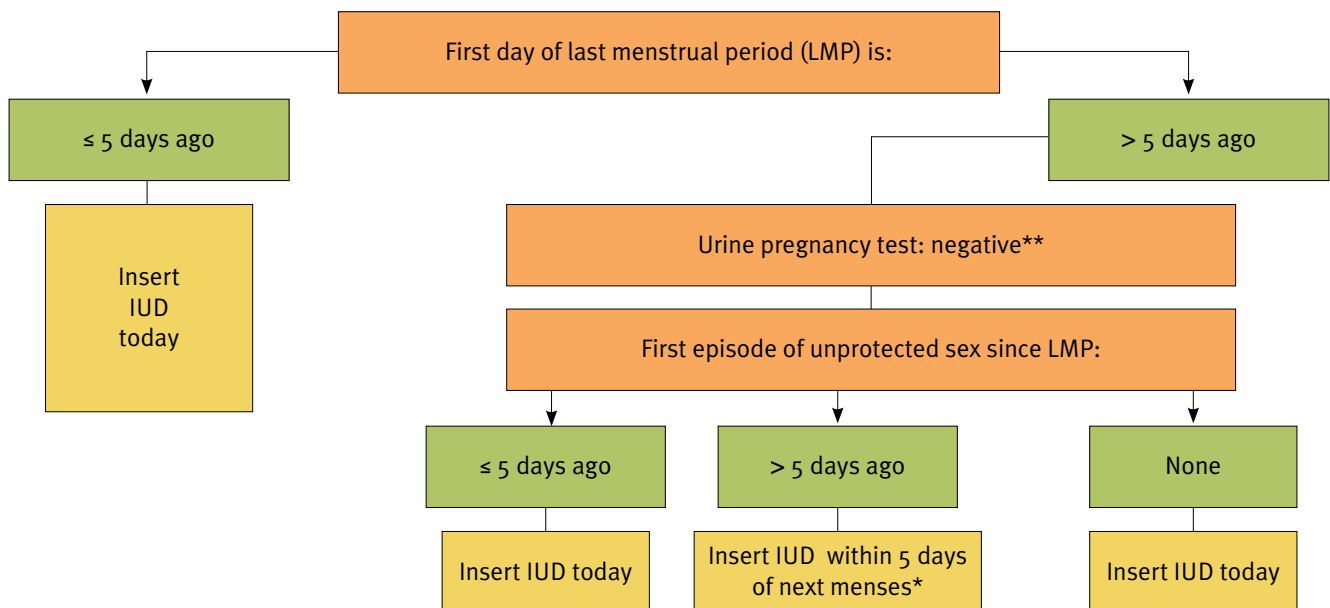
* Because hormonal EC is not 100% effective, check urine pregnancy test 2 weeks after EC use.

** If pregnancy test is positive, provide options counseling.

2. Progestin IUD or Implant



3. Copper IUD



* Pill/patch/ring may be started as a bridge to copper IUD.

** If pregnancy test is positive, provide options counseling.

Note: These algorithms are based on the algorithm for injected progestin that appears in the 2005 *Pocket Guide to Managing Contraception* by Hatcher RA, Zieman M et al, page 135.