

Figure 1. Evaluation of First Trimester Bleeding

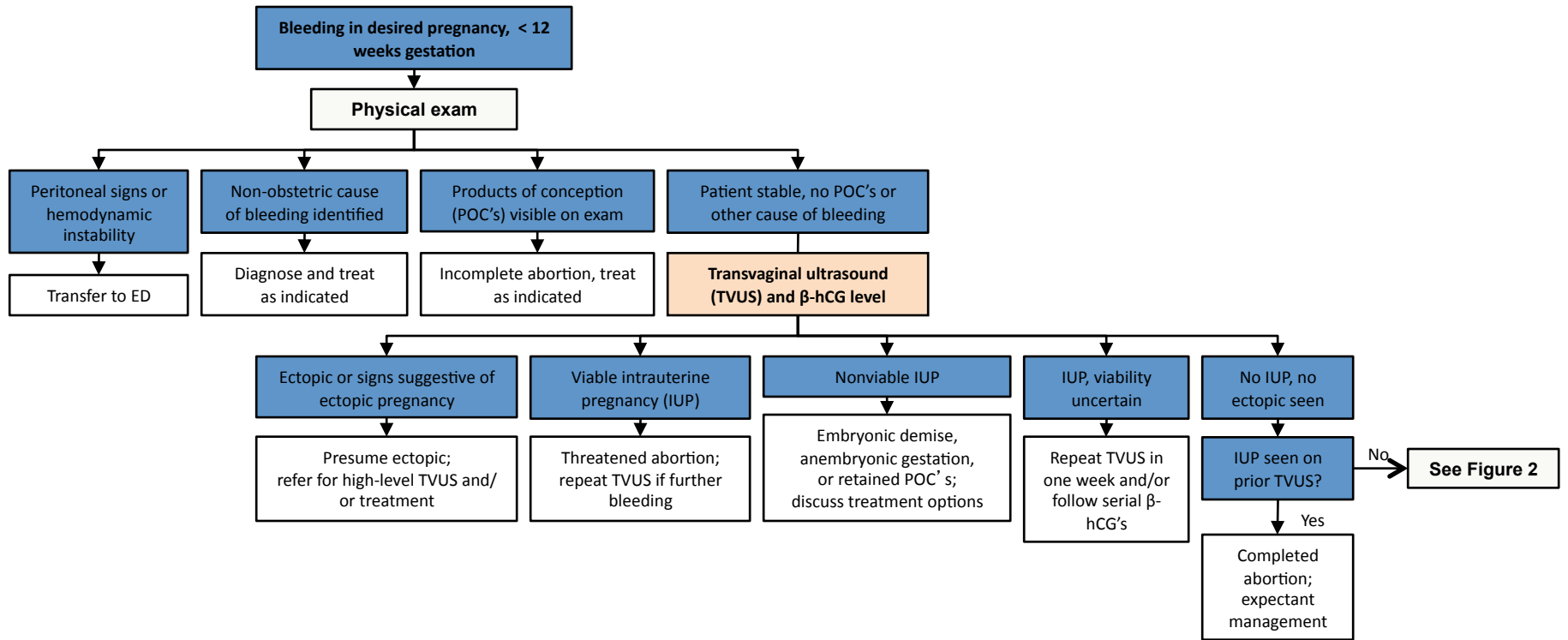
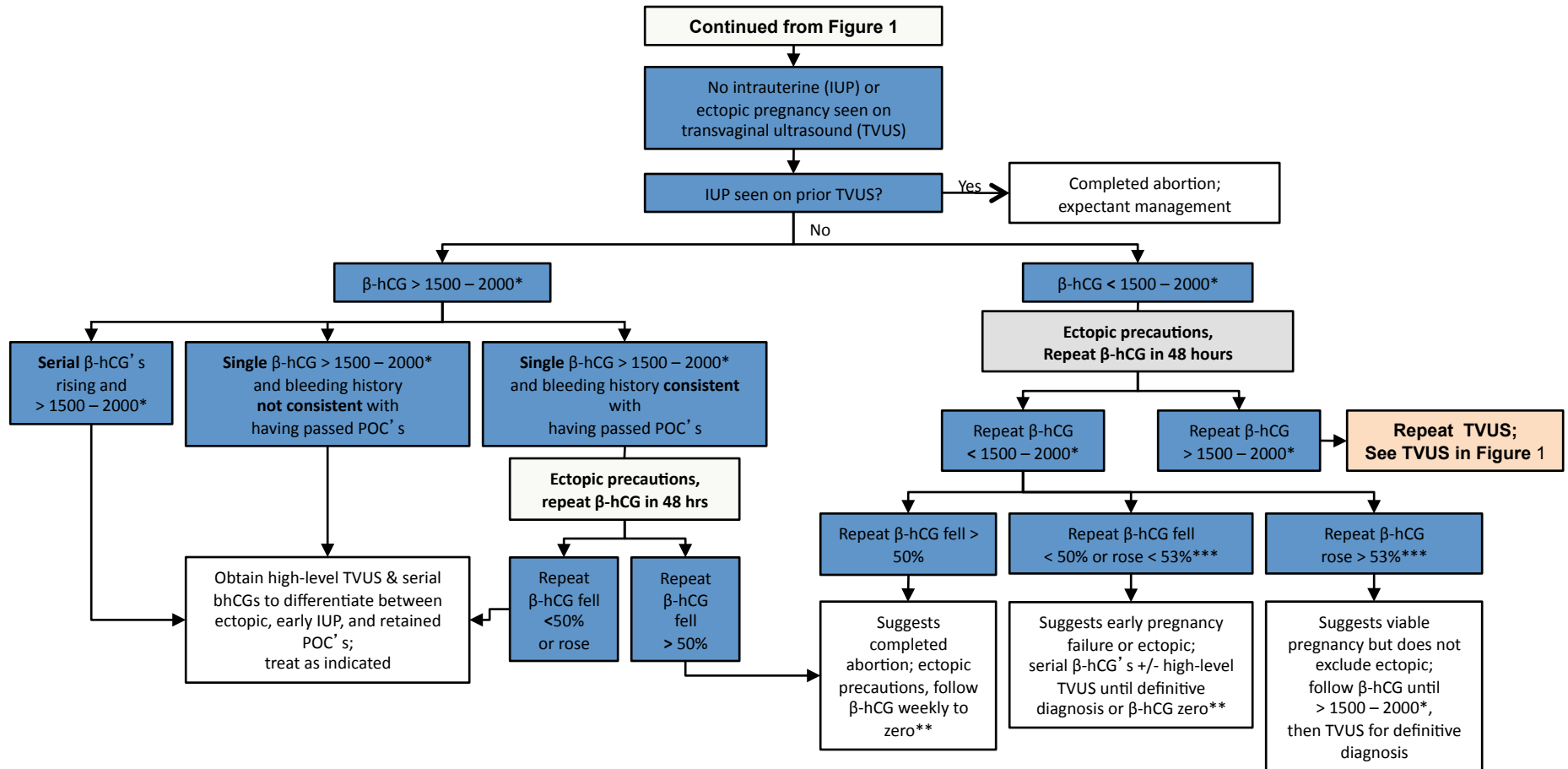


Figure 2. Evaluation of first trimester bleeding with no intrauterine pregnancy on ultrasound



* The β -hCG level at which an intrauterine pregnancy should be seen on transvaginal ultrasound is referred to as the discriminatory zone and varies between 1500 – 2000 mIU depending on the machine and the sonographer.

** β -hCG needs to be followed to zero only if ectopic pregnancy has not been reliably excluded. If a definitive diagnosis of completed miscarriage has been made there is no need to follow further β -hCG levels.

*** In a viable intrauterine pregnancy there is a 99% chance that the β -hCG will rise by at least 53% in 48 hours. In ectopic pregnancy, there is a 21% chance that the β -hCG will rise by 53% in 48 hours.