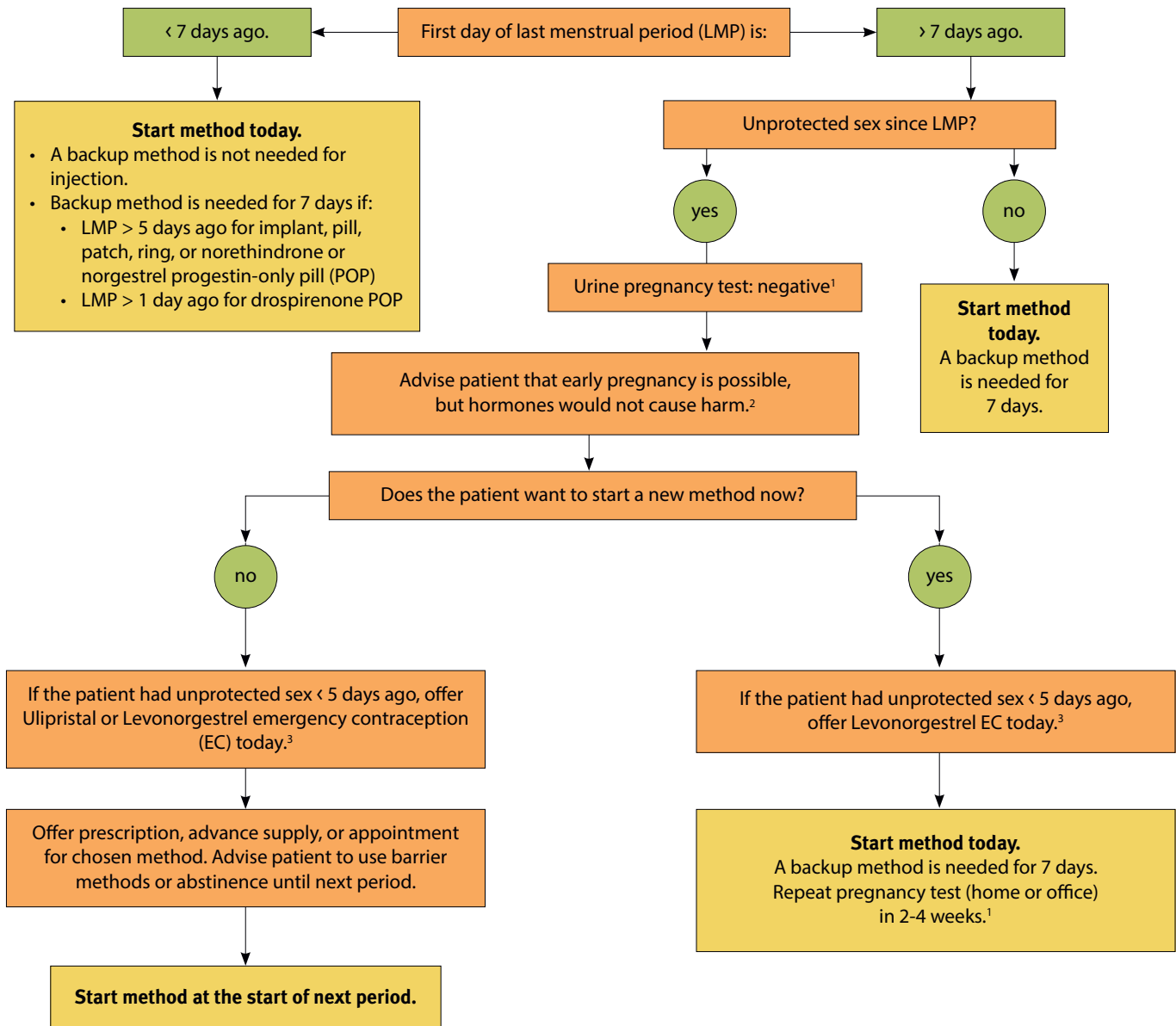


Quick Start Algorithm for Hormonal Contraception²

Patient requests new birth control method:

Pill, Patch, Ring, Injection, Implant

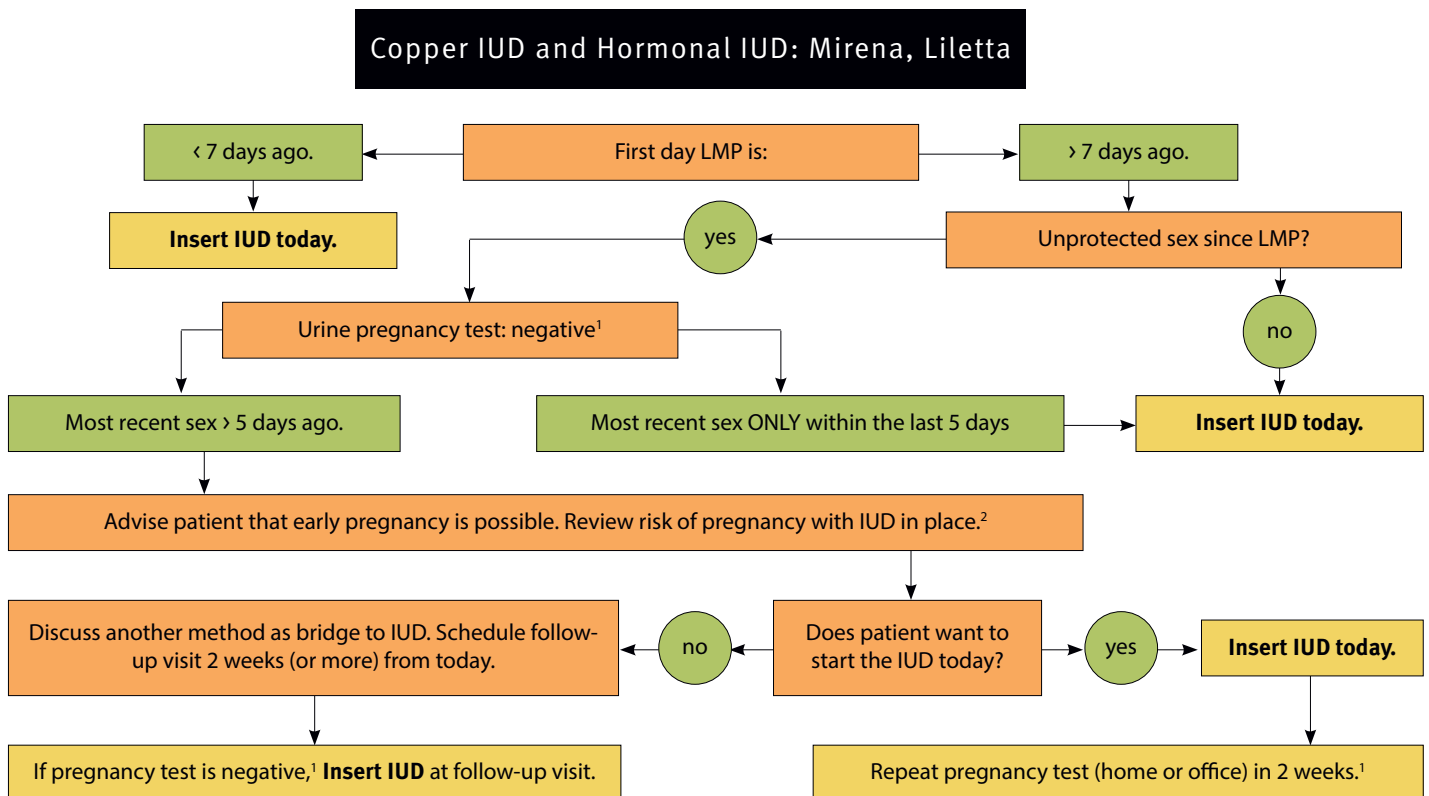
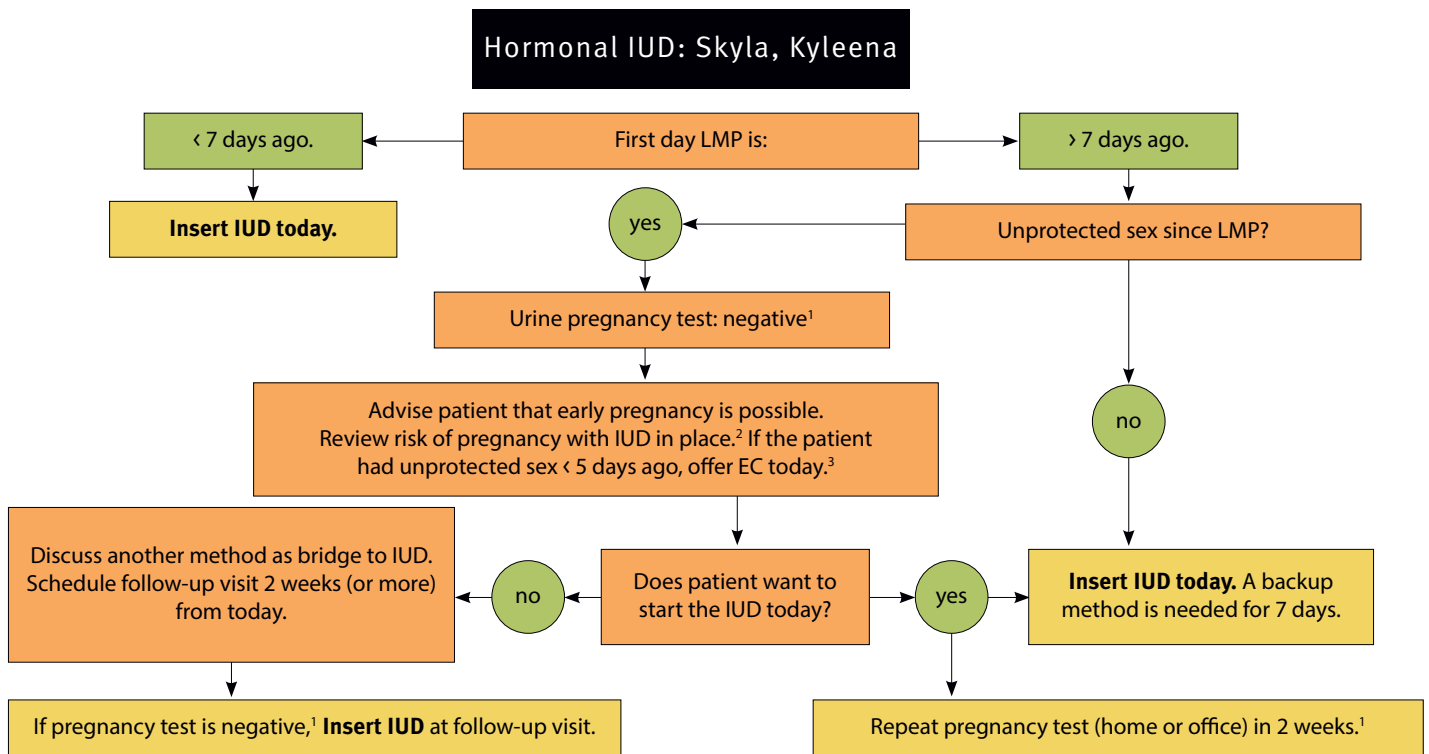


1 If pregnancy test is positive, provide options counseling.

2 Based on the "US Selected Practice Recommendations for Contraceptive Use" from the CDC – Benefits of starting contraceptive likely exceed risk of early pregnancy.

3 Because hormonal contraceptives may interact with ulipristal EC, the new method should be started no sooner than 5 days after ulipristal acetate. Consider starting injection/implant sooner if benefit outweighs risk.

Quick Start Algorithm for IUDs²



1 If pregnancy test is positive, provide options counseling.

2 The “US Selected Practice Recommendations for Contraceptive Use” from the CDC advises ruling out pregnancy before IUD insertion. Lower dose LNG IUDs (Skyla, Kyleena) haven’t been studied for Quick Start. Clinicians may discuss the benefits of same-day insertion (e.g. improved access, patient convenience) balanced against a small risk of harming an early pregnancy caused by inserting an IUD.

3 Because hormonal contraceptives may interact with ulipristal EC, the new method should be started no sooner than 5 days after ulipristal acetate. Consider starting IUD sooner if benefit outweighs risk.